

400 Regency Forest

400 Regency Forest Drive Cary, NC 27511



Features:

- 111,706-Square-Foot Class-A Office Building for Lease
- First Floor – 4,062 RSF
First Floor – 5,840 RSF
- Second Floor – 7,365 RSF
- Available Immediately
- Rental Rate:
\$21.50/SF, Full-service
- Beautiful brick and glass construction
- Lobby area recently renovated
- Fully sprinklered
- 2.5-inch Nexus micro raised carpeted flooring throughout office areas
- Strategically located in Regency Park, near the intersection of US 1 and US 64
- Less than 3 miles from I-40 and approximately 15 minutes from Raleigh-Durham International Airport
- **137,500-SF 600 Regency Forest Site Plan Approved – Now Pre-Leasing!**

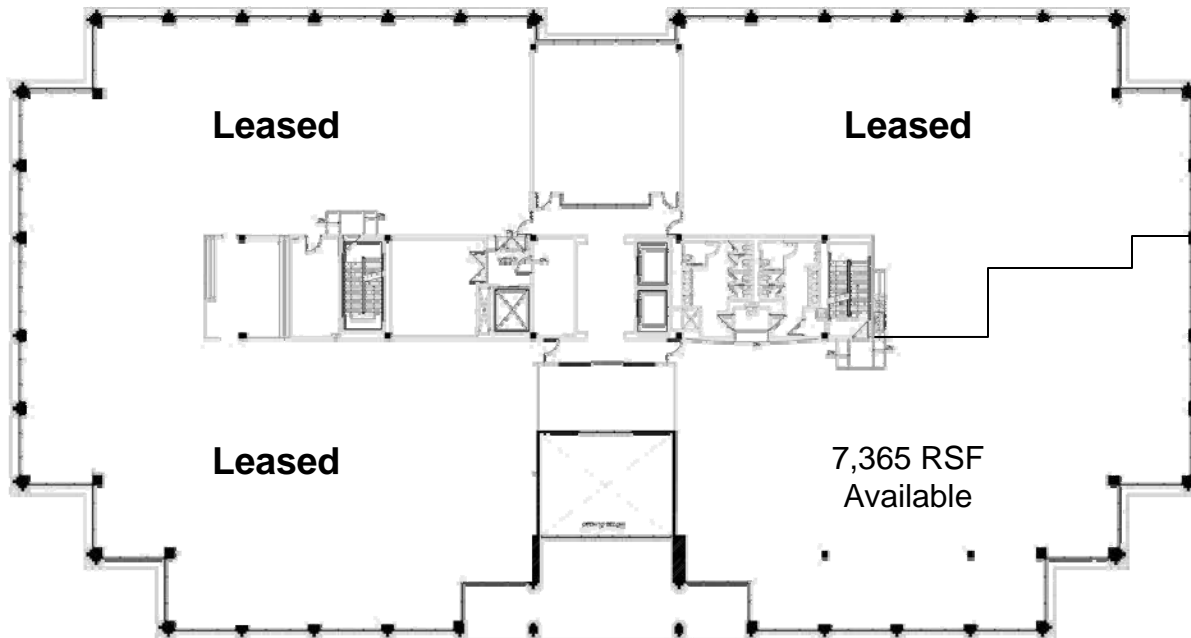
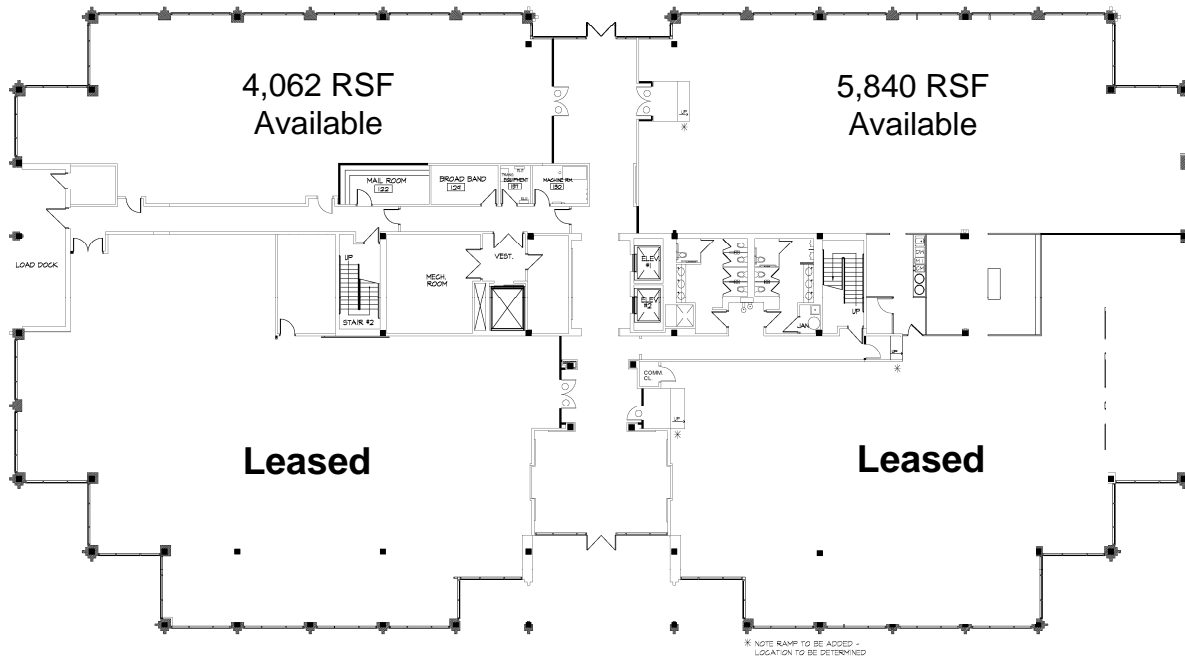


For more information
please contact:

William Allen, SIOR
Senior Vice President
919.420.1565
william.allen@tlgcre.com

400 Regency Forest

400 Regency Forest Drive Cary, NC 27511



Thomas Linderman Graham Inc.

www.TLGCRE.com

Raleigh
 1511 Sunday Drive, Suite 200
 Raleigh, North Carolina 27607
 919.785.3434 919.785.0802 fax

Chapel Hill
 100 Europa Drive, Suite 190
 Chapel Hill, North Carolina 27517
 919.968.4017 919.929.7913 fax

Durham
 2200 W. Main Street
 Durham, North Carolina 27705
 919.286.5900 919.286.4191 fax

Independently Owned and Operated

The information contained herein was obtained from sources believed reliable; however, Grubb & Ellis|Thomas Linderman makes no guarantees, warranties, or representations as to the completeness or accuracy thereof. The presentation of this property is submitted subject to errors, omissions, changes of price or conditions prior to sale or lease, or withdrawal without notice.